



**ALASKA DIVISION OF HOMELAND
SECURITY & EMERGENCY
MANAGEMENT**



**Daily Situation Report
26-106 • April 16, 2026**

Toll-Free 1.800.478.2337

Anchorage Area 907.428.7000

SEOC 907.428.7100

<p><u>SEOC Preparedness Level</u> Level 1-Routine Operations</p>	<p>http://ready.alaska.gov</p>	<p><u>Alaska Military Installation Force Protection Level:</u> FPCON Bravo</p>
<p><u>NTAS Bulletin</u> There are no current advisories https://www.dhs.gov/national-terrorism-advisory-system</p>	<p><u>Maritime Security (MARSEC)</u> Level:1 Minimum Appropriate Security Measures</p>	

(Significant changes from previous situation reports are red.)

Significant Issues:

2025 West Coast Storm

Small Business Administration (SBA) has approved the Governor's request for a Rural Declaration for Bering Strait REAA. This declaration allows for impacted residents in the Bering Strait REAA that are homeowners, renters, or businesses to apply for low-interest federal disaster loans in the designated rural area if they suffered significant damage from Ex-Typhoon Halong.

2025 October West Coast Storm Disaster:

160 households/ **592** individuals transitioned from non-congregate shelters (hotels) to longer-term housing (apartments)

In Non-Congregate Shelter (hotels) Individuals:**19** Households:**5**

Division of Homeland Security and Emergency Management Public Information:

For current press releases, see:

<https://ready.alaska.gov/PublicInformation/PressReleases>

Department of Health (DOH):

For current information, see: <https://health.alaska.gov/en/>

Travel Alerts and Conditions:

Nenana River Bridge at Moody (MP 243): Maintenance work is being conducted between 7am and 5:30pm. Full closures are scheduled on April 23, 25, 27, and 29 from 12am to 6am.

For current driving conditions, dial 511 or visit: <https://511.alaska.gov/>

Barry Arm Landslide / Tsunami Risk:

For the latest information on the Barry Arm Landslide and Tsunami risk, click here: <https://dggs.alaska.gov/hazards/barry-arm-landslide.html>

Earthquakes:

United States Geological Service (USGS) Earthquake Information: [Earthquake Hazards Program | U.S. Geological Survey](#) - National Tsunami Warning Center: <https://tsunami.gov/>

Alaska Volcanoes:

Great Sitkin: Alert Level: Watch and Aviation Color Code: Orange
Shishaldin: Alert Level: Advisory and Aviation Color Code: Yellow
For Alaska Volcano updates, go to: <https://www.avo.alaska.edu/>

Air Quality Index (AQI) Advisories:

For the most up-to-date Air Quality Index Advisories: <https://dec.alaska.gov/Applications/Air/airtoolsweb/Advisories>

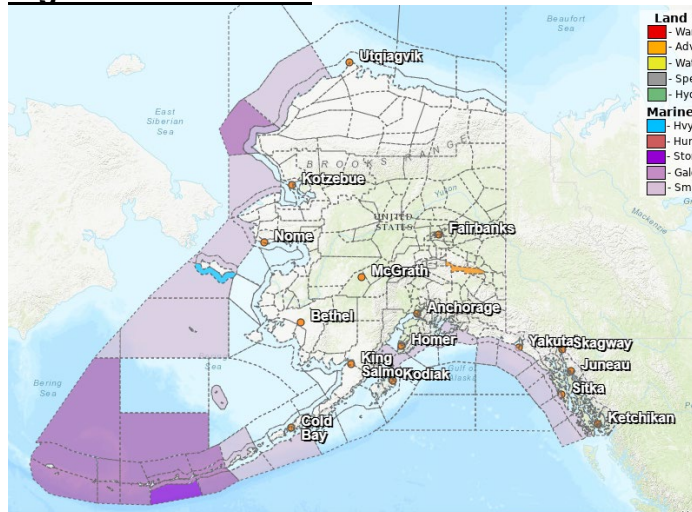
Spills of Oil and Hazardous Substances:

The Alaska Division of Environmental Conservation (ADEC) Spill Prevention and Response page is located at: <https://dec.alaska.gov/spar/ppr/spill-information/response/>

Alaska Cyber Security Information:

State Employees may sign up for cybersecurity notifications and alerts at: <https://oit-int.alaska.gov/security/>

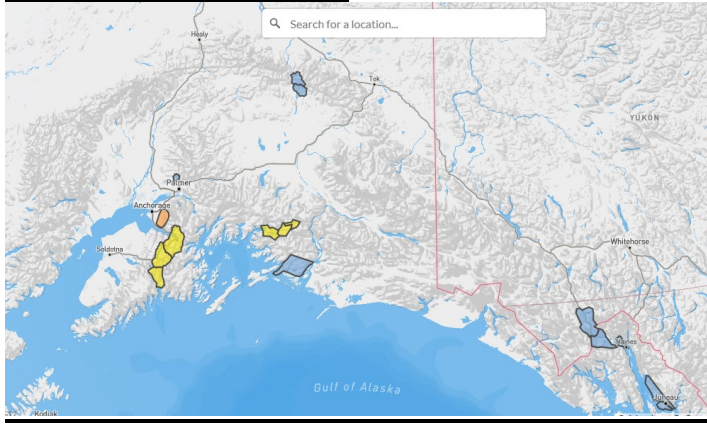
Significant Weather:



Winter Weather Advisory is in effect for Eastern Alaska Range South of Trims Camp until 4pm Saturday.

For more information, go to <https://www.weather.gov/arh/>

Avalanche Conditions:



Chugach State Park – Considerable all elevations.

Turnagain Pass and Girdwood – Moderate at all elevations.

Summit Lake – Moderate at all elevations.

Seward and Lost Lake – Moderate at all elevations.

Valdez: Maritime, Intermountain, Continental – Moderate at all elevations.

For more information and the most current avalanche conditions, go to <https://alaskasnow.org>

The Next Situation Report will be on **April 17, 2026**. A significant change in situation or threat level will prompt an interim report. This report is posted on the internet at <https://ready.alaska.gov/sitrep>.

To register for email distribution, go to: <http://list.state.ak.us/mailman/listinfo/dhsem.situation.report>.
Direct questions regarding this report to the SEOC at 907-428-7100 or seoc@alaska.gov